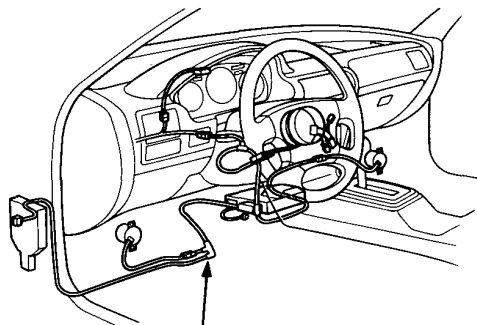


Cruise Control

SET/RESUME Switch Test (KE model)

CAUTION:

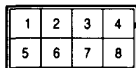
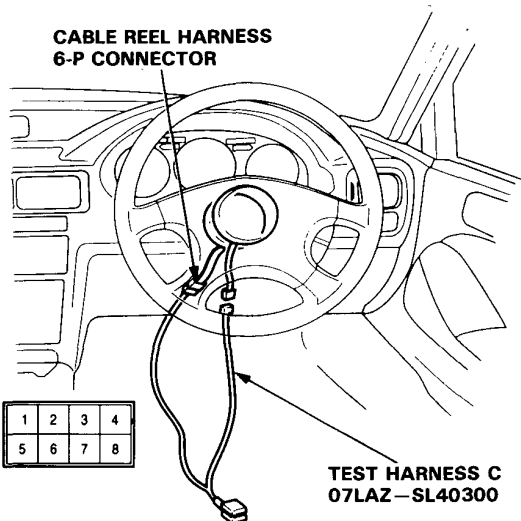
- All SRS electrical wiring harnesses are covered with yellow outer insulation.
- Replace the entire affected SRS harness assembly if it has an open circuit or damaged wiring.
- Before disconnecting the SRS wire harness, install the short connector on the airbag.



SRS MAIN HARNESS

1. Disconnect the cable reel harness 6-P connector from the SRS main harness, then connect Test Harness C only to the cable reel harness.

CABLE REEL HARNESS
6-P CONNECTOR



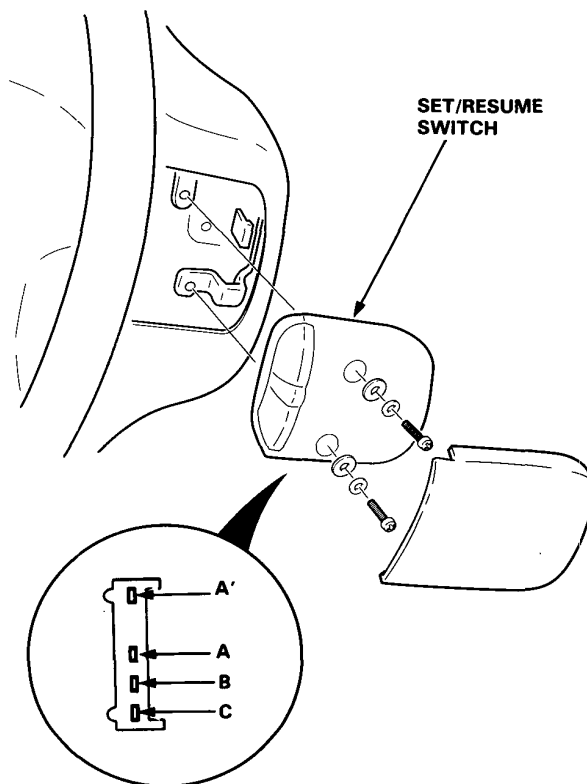
TEST HARNESS C
07LAZ-SL40300

2. Check for continuity between the terminals in each switch position according to the table.

Terminal Position	3 (BLU/RED)	2 (LT GRN/RED)	1 (LT GRN/BLK)
SET (ON)	○	○	
RESUME (ON)	○		○

- If there is continuity, the SET/RESUME switch is OK.
- If there is no continuity, go to step 3.

3. Remove the switch cover from the SET/RESUME switch, then separate the SET/RESUME switch by removing the two screws.



4. Check for continuity between the terminals in each switch position according to the table.

Terminal Position	A or A'	B	C
SET (ON)	○		○
RESUME (ON)	○	○	

- If there is continuity, replace the cable reel.
- If there is no continuity, replace the switch.